



St Peter  
Claver  
Diocese of Lexington, KY

**Pearson & Peters Architects**  
**Dean Builds, Inc.**

**July Update**

**NEW CHURCH SANCTUARY**



# Saint Peter Claver, Our History



The Sisters of Charity of Nazareth built the St. Martin DePorres Center as a school for African Americans in 1887. Four years later a chapel was dedicated to St. Peter Claver on the second floor. This chapel served the community from 1891 to 1948. St. Peter Claver Church holds the distinction of being the first Roman Catholic parish establish for the Catholic African American community in the Diocese of Lexington. In 1947 construction began on the original church at Fourth and Jefferson, completed and blessed on December 8, 1947, with formal dedication on February 13, 1949. Renovation and construction began on the new St. Martin DePorres Education Center on July 1, 2013 and was dedicated on June 27, 2015.

**St. Peter Claver, pray for us!!!**



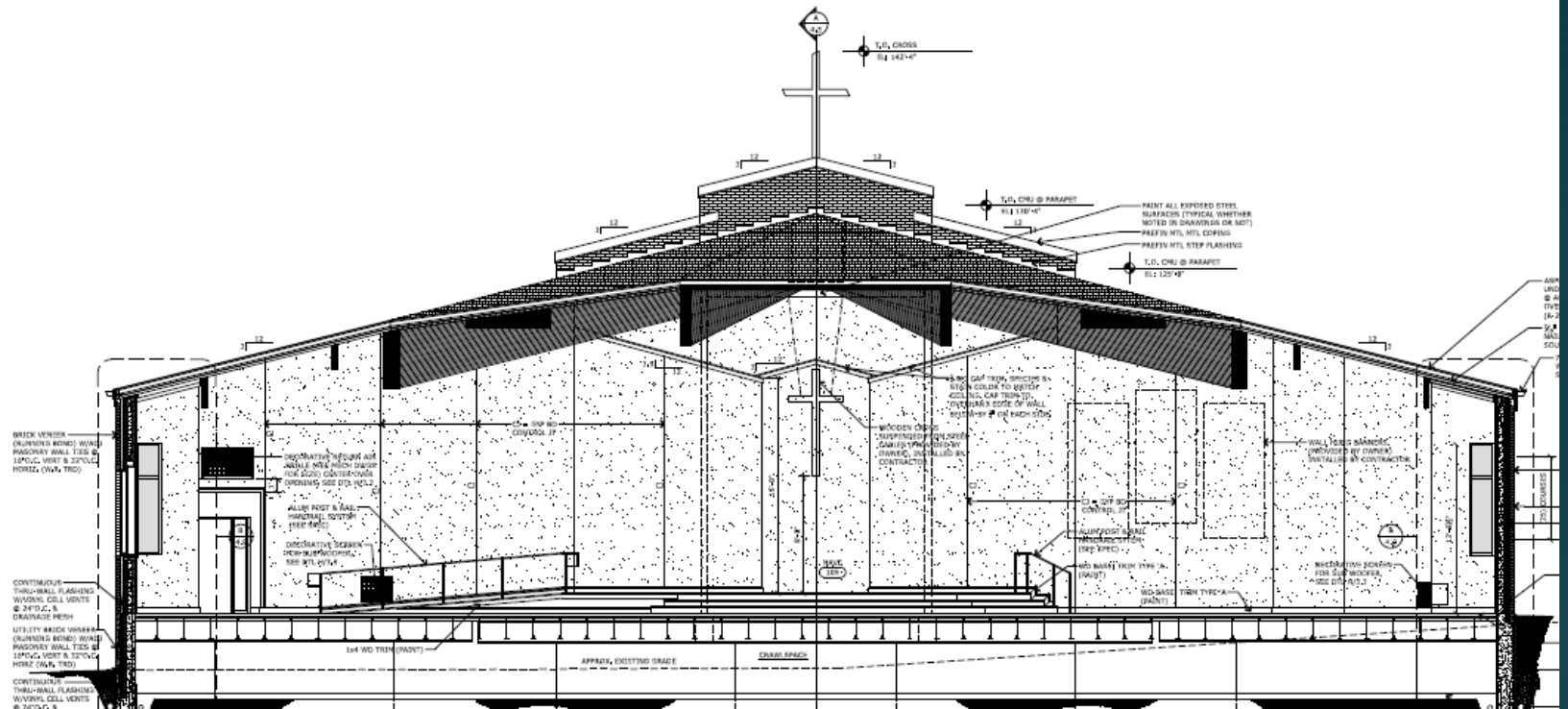
# Mission Statement:



At St. Peter Claver, we are a community of faith made up of parishioners who uphold the Catholic Tradition. We believe in a community, which supports families and children, religious education, outreach, and fellowship. St. Peter Claver promotes a worship environment that is visually and spiritually Afrocentric. The Eucharist is the source of the energy that moves us to community service and evangelization. This is done in concert with other Christian communities under the guidance of the Holy Spirit.

St. Peter Claver, pray for us!!!

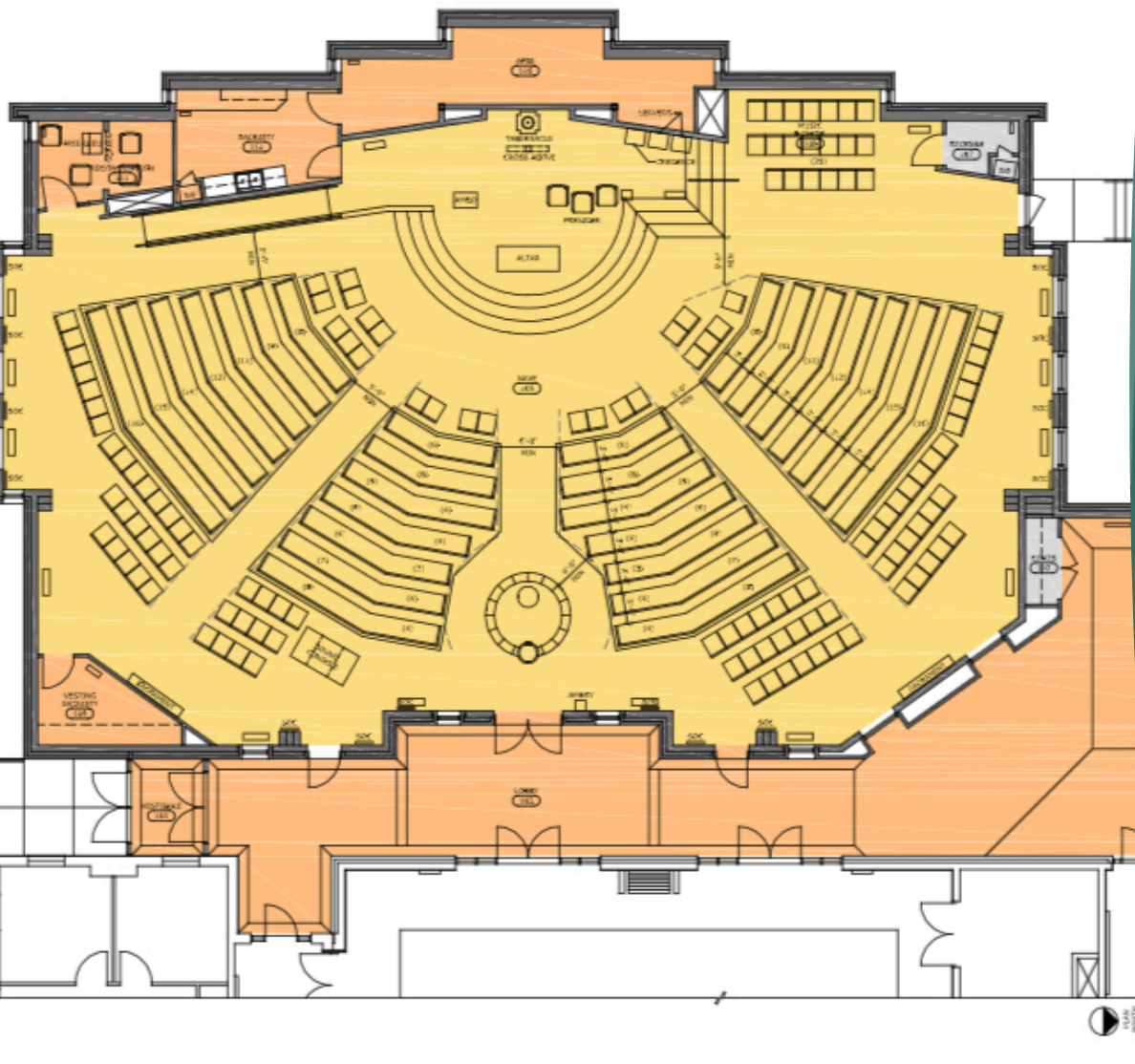




# SPC Church Sanctuary

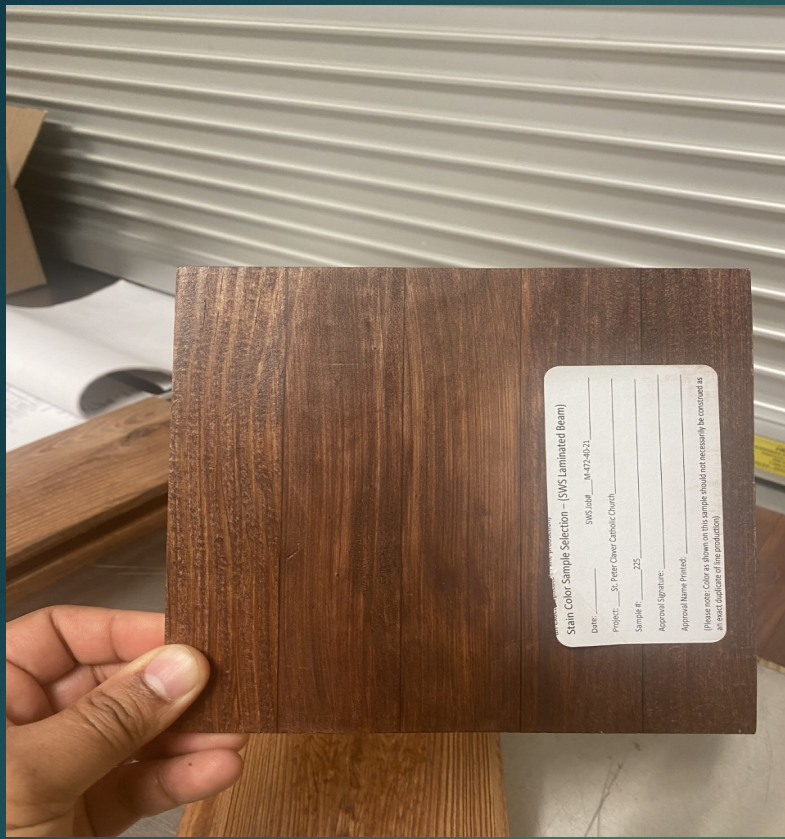


of 1

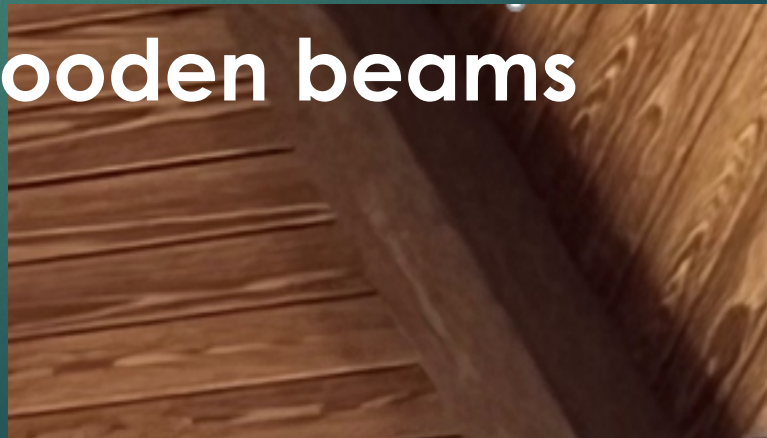


# Aerial of Saint Peter Claver Sanctuary





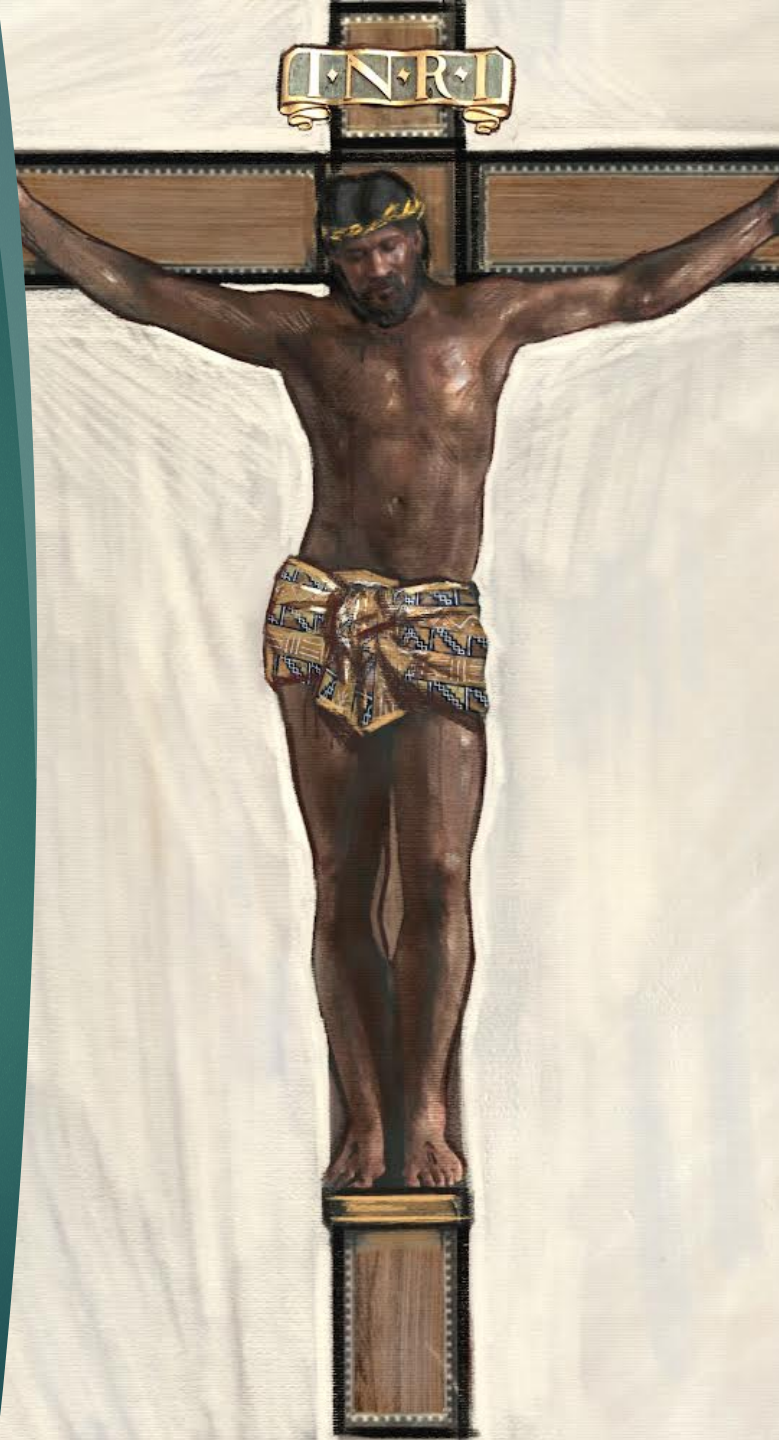
# Stain selection for wooden beams and ceiling





# Black Crucifix (suspended over the altar) (Commissioned)

Fernando Cidoncha, of the Scuola di Arte Sacra Firenze of Florence Italy designed a Crucifix with a fisionomy adequate for a black Catholic Church, so the congregation can see themselves in the sacred artwork. Apart from the fisionomy of the crucified, Fr. Norman instructed him to include patterns in mud cloth that symbolize “brave, strong warrior”. The crown of thorns and the title “INRI” will be gilded. There will be Ebony that will decorate the cross.









# St Michael Archangel (commissioned)

- ▶ Sanctuary Sacred Art by Amber Pitts Knorr
- ▶ 3'x4' Oil Painting on canvas with gilded frame
- ▶ QUIS UT DEUS –  
“Who is like  
God”





# St Peter Claver lithograph

by Raul  
Berzosa



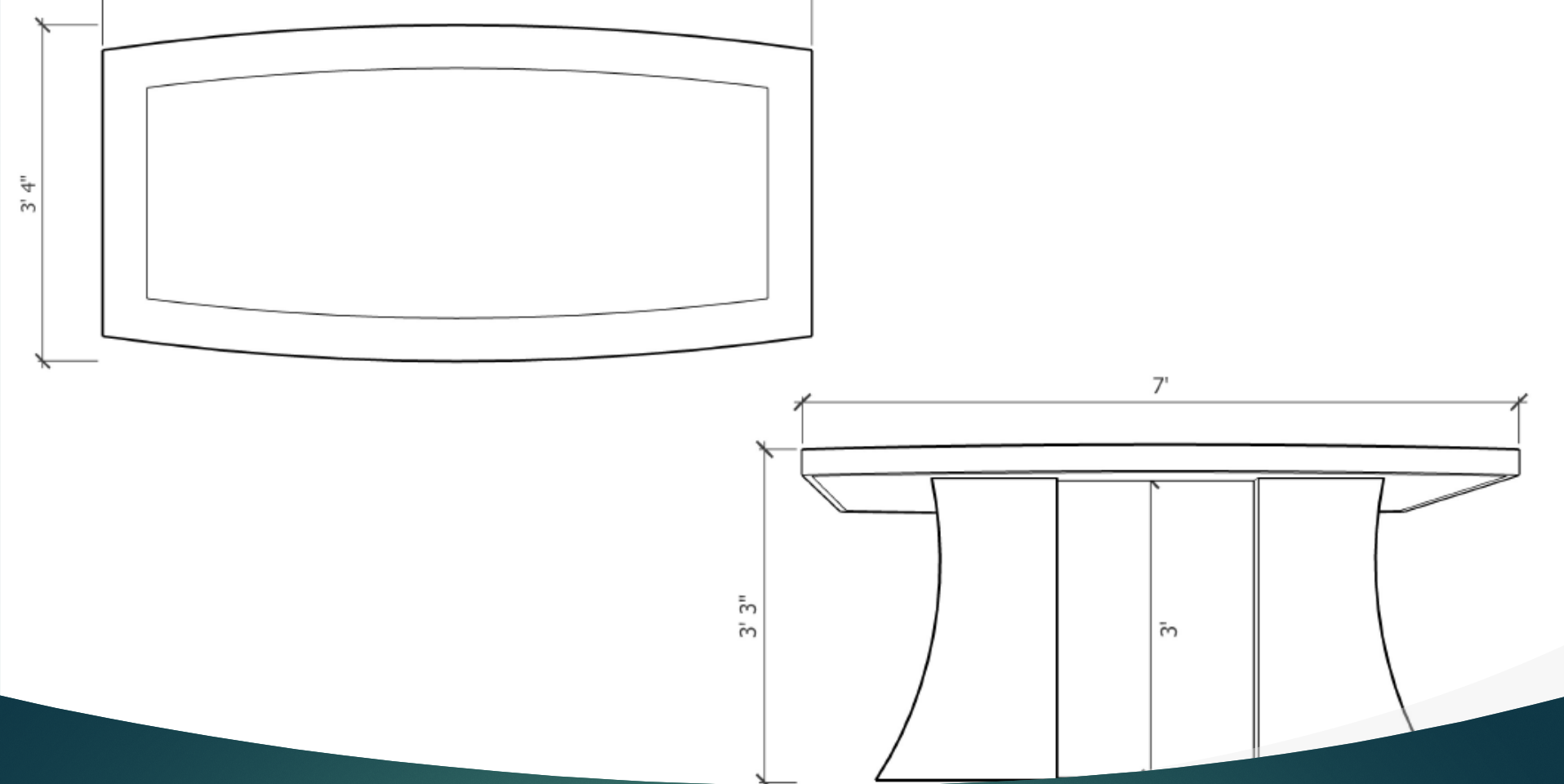




Altar

Custom made of African cherry with maple veneer accents & granite Mensa  
By Deacon Tom Tosti, Tekton Woodworks, UT



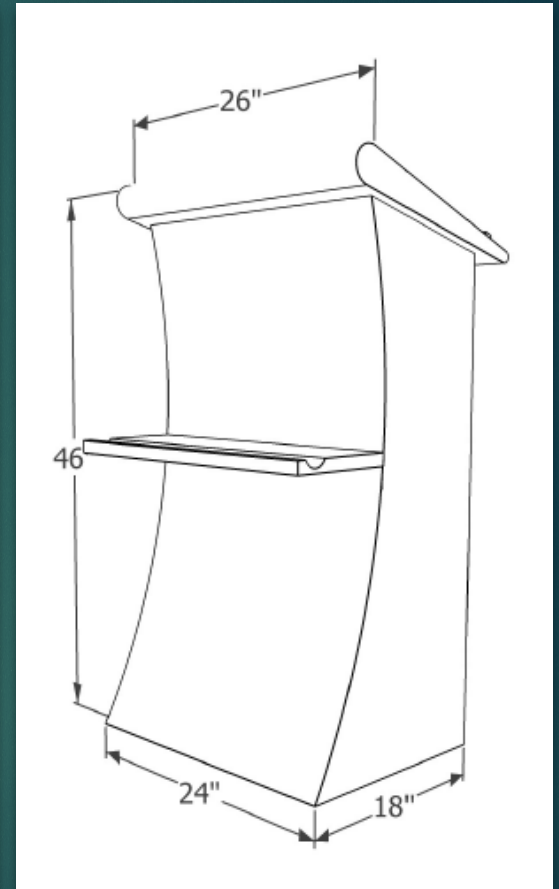


Altar Dimensions

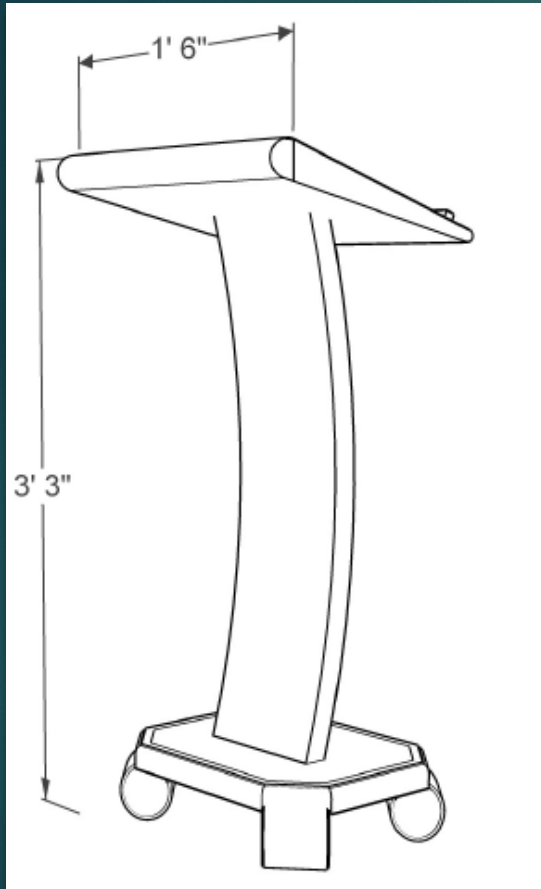


Ambo

African Cherry with Maple  
veneer accents



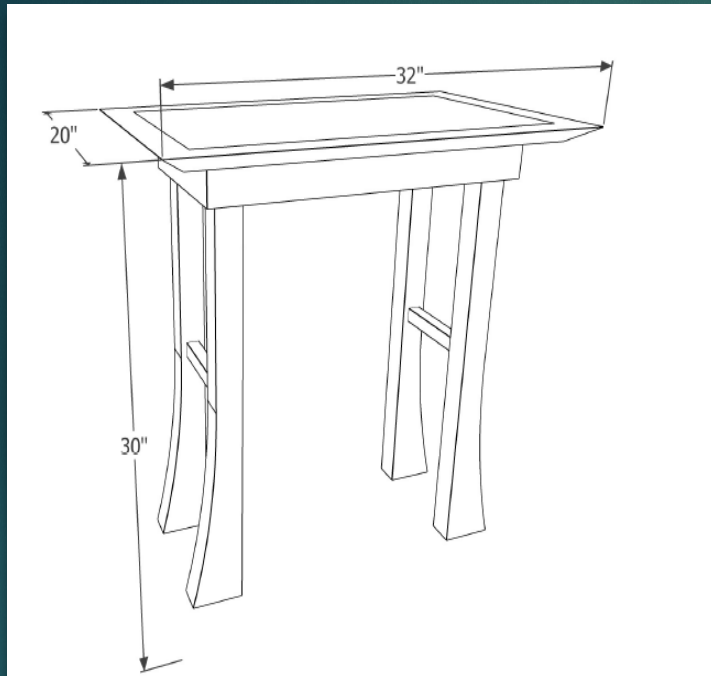




Book Stand

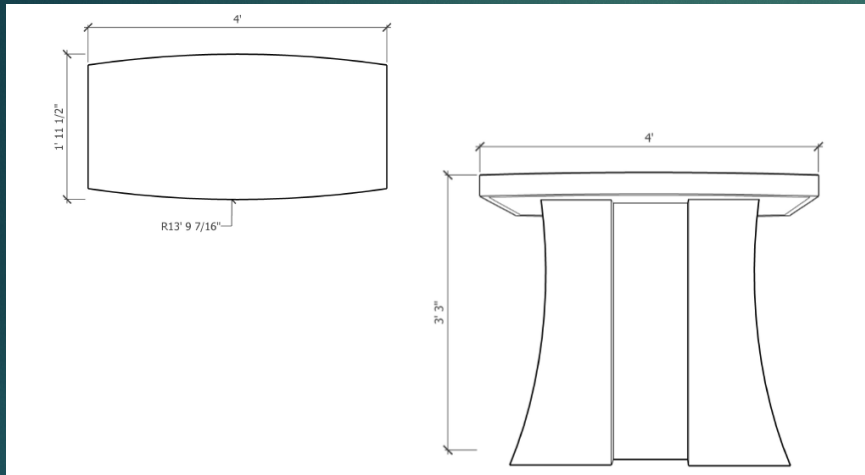
African Cherry with  
Maple veneer  
accents





Credence Table





Tabernacle Altar with Granite





# Granite selection for Altar furniture





Bronze  
tabernacle  
features high  
polish accents  
on satin  
housing.  
Dimensions are  
34"H x 19"D.



Presider and  
deacon  
chairs.  
Custom  
designed and  
handcrafted  
by Abbey  
Woodworking,  
founded by  
the monks of  
Saint Meinrad  
Archabbey.







Hand blown  
baptismal bowl by  
Stephen Powell







Bronze Holy  
Water Wall Font  
With Shell and  
Flowing Water  
Design



Our Lady of  
Kibeho &  
Black Saints  
Printed on  
Stretched  
Canvas  
donated by  
the Peevy  
Family







# Baptism of the Ethiopian Eunich, by St Phillip

by Salvador  
Dali, Signed  
Print with  
gold-leaf

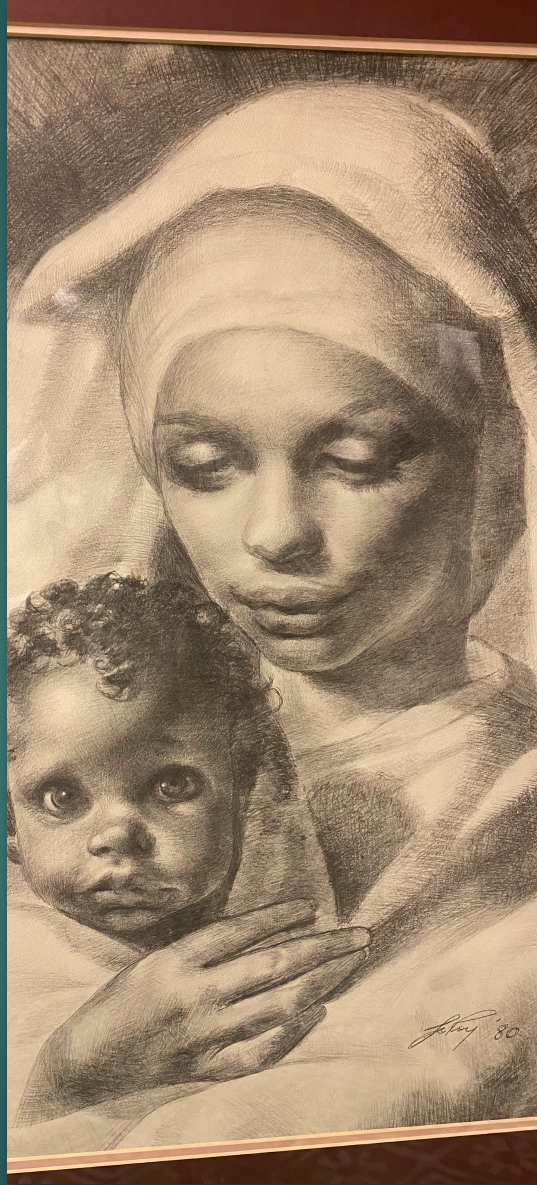
donated by  
Joyce Fister &  
Dale Family



Framed Images  
of Saint Peter  
Claver original  
church-stained  
glass windows  
will be displayed







Sacred Art  
Collection  
from  
original  
church